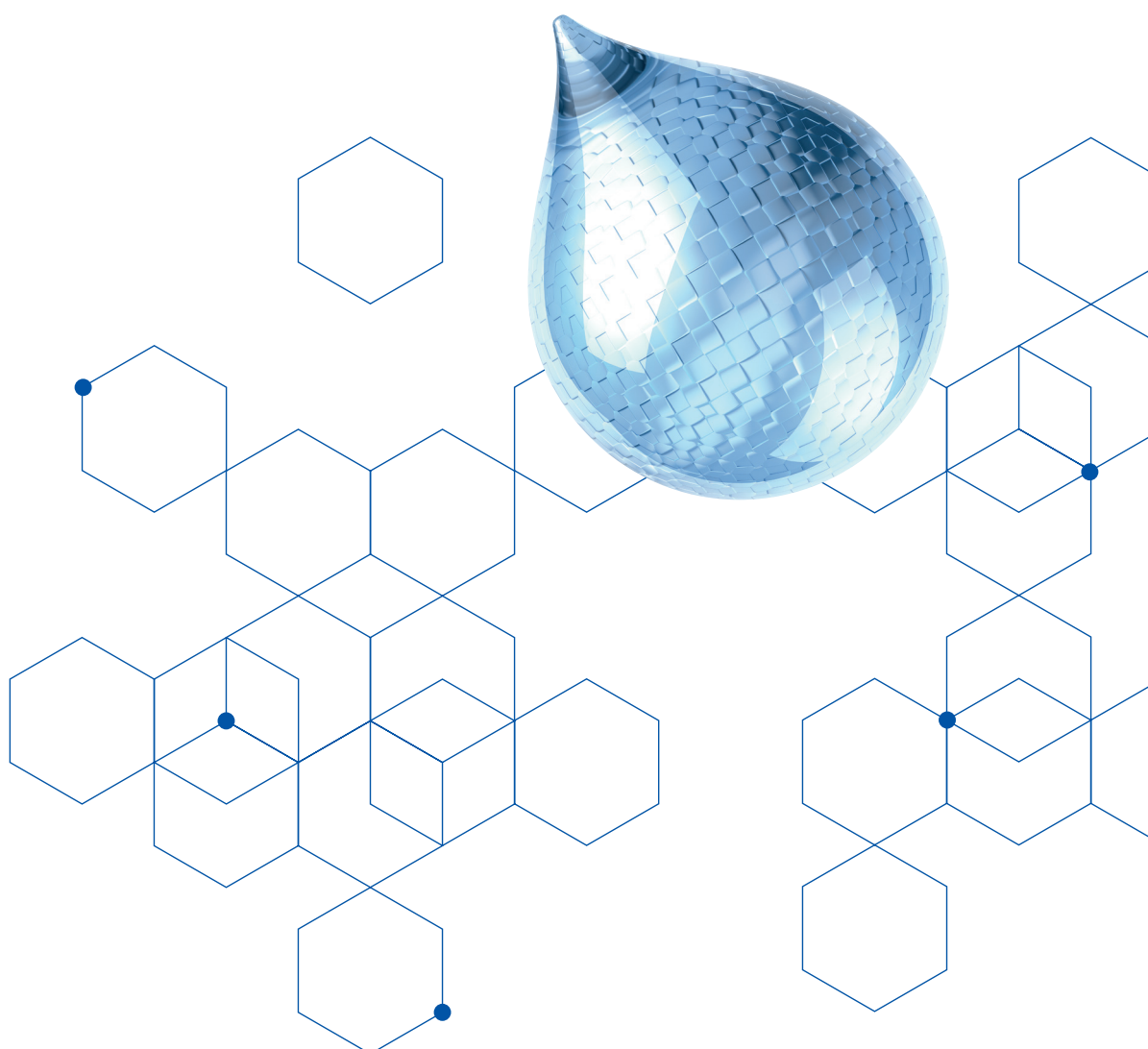


BÜFA Composite Systems

UP- & VE Resins

AOC Portfolio Overview



AOC Portfolio Overview

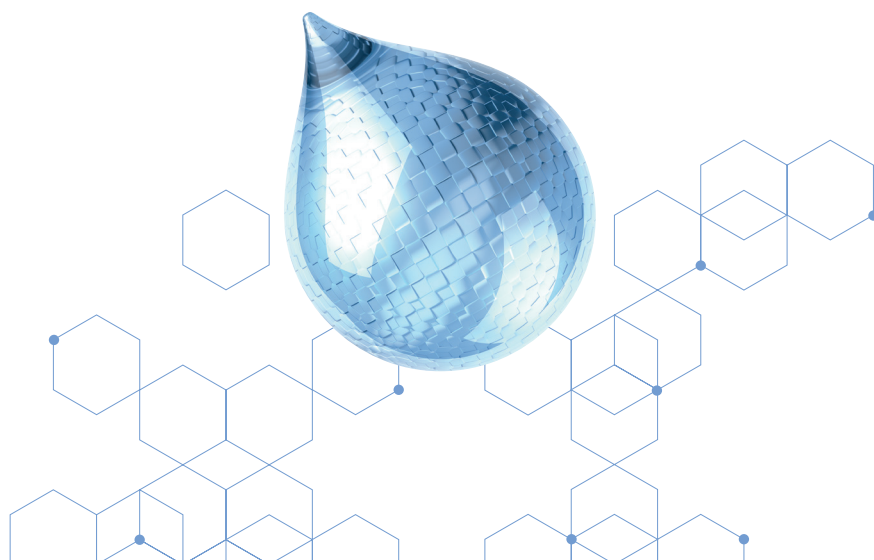
UP- & VE Resins

Unsaturated polyester and vinyl ester resins offer a wide range of application possibilities and a number of advantages.


Discover an exclusive product selection from the AOC portfolio here.

In addition to the AOC resins listed here, we offer numerous other AOC resin variants with different properties such as heat deflection temperature (HDT), glass transition temperature (TG) and styrene content on request an different specific applications.


The majority of the AOC resins have the necessary approvals, such as DNV or Lloyd's Register, to ensure the highest quality standards and are individually adjustable, so that you can obtain customized solutions for your specific requirements.




Casting application & filled systems

Productname	Item no.	Resin base	Application	Characteristics	Main industry	Note
PALATAL P 4-01	0200004	OP	Casting	Wide range of applications, for polymer concrete and artificial marble, not pre-accelerated, Lloyd's approval	Wide range of applications	
SYNOLITE 0328-A-1	7700328	OP	Casting	Clear casting resin with little colour, low reactivity, pre-accelerated, can also be used as an embedding resin	Wide range of applications	
SYNOLITE 0564-A-1	7705641	OP/NPG	Casting	For filler/resin castings that require a brilliant color after cure; e.g. onyx and (white) marble imitations with low amounts of pigments and dyes. UV-stable	Wide range of applications	
SYNOLITE 5750-A-3	7705751	DCPD	Casting	For general casting applications and can be used specifically for shower tray casting behind a gel coat or primed ABS capped acrylic.	Wide range of applications	
SYNOLITE 1112-G-1	7701112	rPET	Casting	For the production of components through casting processes, often used in sanitary and bathroom applications. Excellent filler wet out	Sanitary	

Hand lay-up


Productname	Item no.	Resin base	Application	Characteristics	Main industry	Note
SYNOLITE 8388-series	770838X	DCPD	Hand lay-up / spray-up	Fast fibre and filler wetting, peroxide indicator, DNV approval, pre-accelerated	Wide range of applications	
SYNOLITE 5410-series	770541X	OP	Hand lay-up / spray-up	low Tmax, medium to long gelling time, pre-accelerated, Lloyd's approval	Wide range of applications	
SYNOLITE 5700-series	020XXXX	OP	Hand lay-up / spray-up	Good mechanical properties, pre-accelerated	Wide range of applications	
SYNOLITE 0288-series	770028X	ISO	Hand lay-up / spray-up	Improved chemical resistance, good mechanical strength, easy application. Lloyd's approved	Wide range of applications (including marine)	
ATLAC 580 ACT	7805800	BPA/VEU	Hand lay-up / spray-up	Excellent hydrolysis resistance and good thermal stability, thixotropic and pre-accelerated. Lloyd's approved	Wide range of applications (including marine)	
SYNOLITE 4600-P-1	7704601	rPET	Hand lay-up / spray-up	Thixotropic, pre-accelerated, promoted, LSE. Lloyd's approved.	Wide range of applications (including marine)	

Productname	Item no.	Resin base	Application	Characteristics	Main industry	Note
SYNOLITE 1967-G-series	770196X	DCPD	RTM / Infusion	Medium reactive resin that has a relatively low exotherm. This resin can be used for thick and thin laminates and shows good through-curing with low shrinkage	Wide range of applications	
SYNOLITE 1967-N-series	7701968	DCPD	Injection	Medium reactive resin that has a relatively low exotherm. This resin can be used for thick and thin laminates and shows good through-curing with low shrinkage	Wide range of applications	
SYNOLITE 8488-G-series	770848X	DCPD	Injection	Pre-accelerated, very low-viscosity resin for particularly fast wetting	Wide range of applications	
ATLAC 580 AC 300	7805803	VEU	RTM / Infusion	Low shrinkage , low exotherm , excellent hydrolisis resistance , Lloyds approval	Wide range of applications (including marine)	
SYNOLITE 4600-G-1	7704600	rPET	RTM / Infusion	Good mechanical properties with optimal processability. The formulation shows very good fiber wetting and impregnation properties. The product has good through cure and relatively low shrinkage. Lloyd's approval	Wide range of applications (including marine)	

Filament Winding Process

Productname	Item no.	Resin base	Application	Characteristics	Main industry
PALATAL A 400-01 FC	0205507	ISO/OP	Filament winding / Pultrusion	highly reactive, DIN 1140 type, not pre-accelerated, Lloyd's approval	Tanks & Pipes / Construction
PALATAL A 410-01	0200410	ISO/NPG	Filament winding / Pultrusion	chemically resistant, adheres to PVC, DIN 1140 type, not pre-accelerated	Tanks & Pipes / Construction
PALATAL P 69-02	0200069	OP	Filament winding/ Pultrusion/Hand lay-up / spray up	highly reactive, DIN 1140 type, not pre-accelerated, Lloyd's approval	Tanks & Pipes / Construction

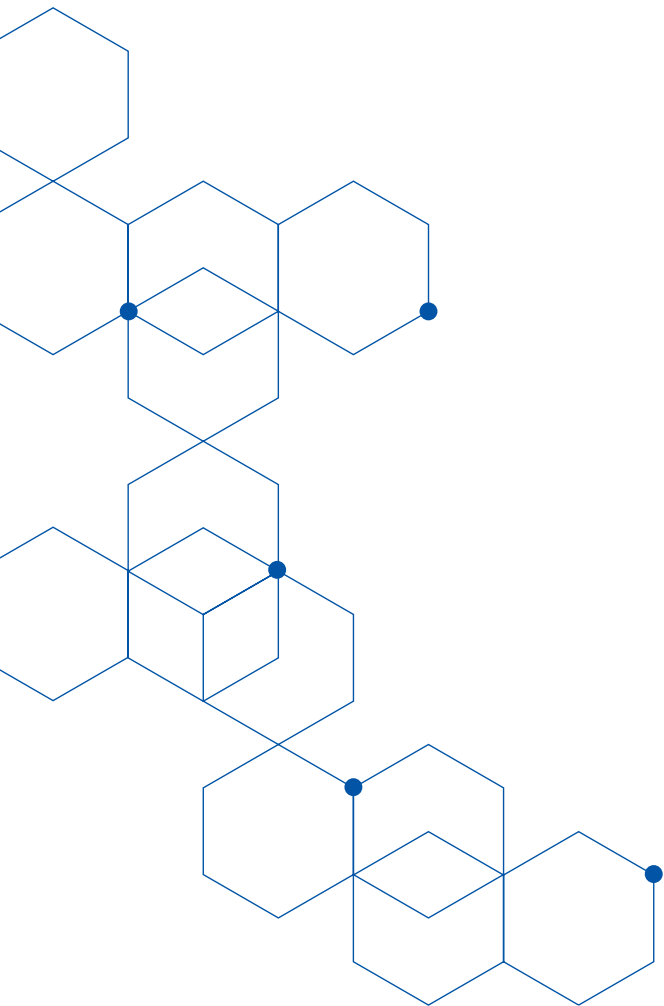
Chemically Resistant Applications

Productname	Item no.	Resin base	Application	Characteristics	Main industry	Note
ATLAC 430	0200430	BPA/VE	Hand lay-up / spray-up / Filament winding / Pultrusion	High resistance to temperature and chemicals, not pre-accelerated	Tanks & Pipes / Marine	
ATLAC F013A	7700014	BPA/VE	Hand lay-up / spray-up / Filament winding	High resistance to temperature and chemicals, not pre-accelerated, improved alkaline	Tanks & Pipes / Marine	
ATLAC 580 ACT	7805800	BPA/VEU	Hand lay-up / spray-up	High resistance to temperature and chemicals, pre-accelerated, thixotropic	Construction / Marine	
ATLAC 590	7800590	EN/VE	Hand lay-up / spray-up / Filament winding / Pultrusion	High resistance to temperature and chemicals, not pre-accelerated	Construction / Windenergy	
ATLAC F086	7700086	EN/VE	Hand lay-up / spray-up / Filament winding	Superior heat resistance combined with highest chemical resistance	Tanks & Pipes / Construction	
ATLAC E-Nova FW 2045	7802719	BPA/VEU	Hand lay-up / spray-up / Filament winding / Pultrusion	High resistance to temperature and chemicals, not pre-accelerated	Wide range of applications	
ATLAC E-Nova MA 6325	7806325	BPA/VEU	Hand lay-up / spray-up	Boat building, swimming pool construction for high chemical and hydrolytic stress, thixotropic, pre-accelerated	Marine	
ATLAC PREMIUM 600	0200600	EN/VE	Hand lay-up / spray-up	Styrene-free resin, zero emissions. Superior resistance against organic solvents. Repair work in confined / non-ventilated places	Tanks & Pipes / Construction	

Pultrusion Process

Productname	Item no.	Resin base	Application	Characteristics	Main industry
PALATAL P 69-02	0200069	OP	Filament winding / Pultrusion / Hand lay-up / spray up	Highly reactive resin, DIN 1140, not pre-accelerated	Construction
PALAPREG P 17-02	0200017	OP	Pultrusion	High resistance to temperature, highly reactive resin for good surface quality with LS additive or LP additive	Construction
SYNOLITE 0175-N-1	7701751	DCPD	Pultrusion	Highly reactive, excellent filler absorption and pigmentability, improved surface quality, not pre-accelerated	Construction
SYNOLITE 0152-N-2	7700152	ISO	Pultrusion	High mechanical strength, UV stabilized, excellent fiber wet out	Construction





12-24

The information given above is based on our current knowledge and experience. In view of the many factors that may influence working conditions and application, the user is not relieved from carrying out his own tests and trials. No legally binding warranty of certain properties or suitability for a particular purpose can be derived from this information. It is the responsibility of the receiver or user of our products to observe proprietary rights as well as existing laws and regulations. The latest version of the EU Safety Data Sheet must also be observed. For Technical Data Sheets and information, go to www.buefa-composites.com

BÜFA
New chemistry.

BÜFA Composite Systems GmbH & Co. KG
Hohe Loohe 2-8
26180 Rastede | Deutschland

Phone +49 4402 975-0
compositesystems@buefa.com
buefa.com

